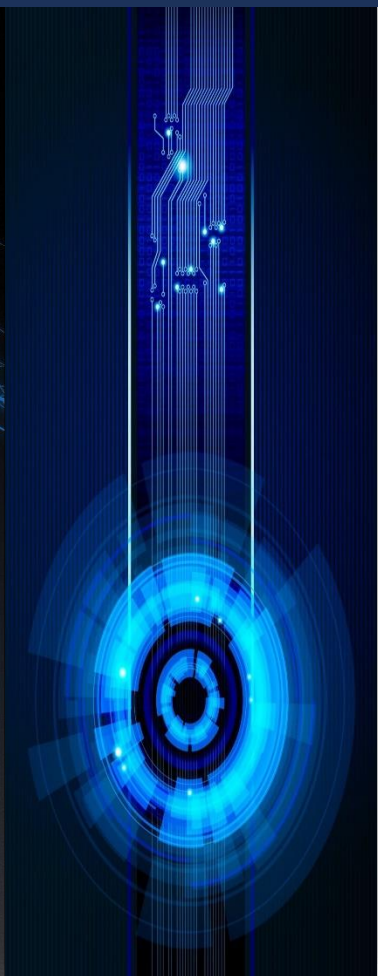




Microsoft Dynamics 365 Business Central

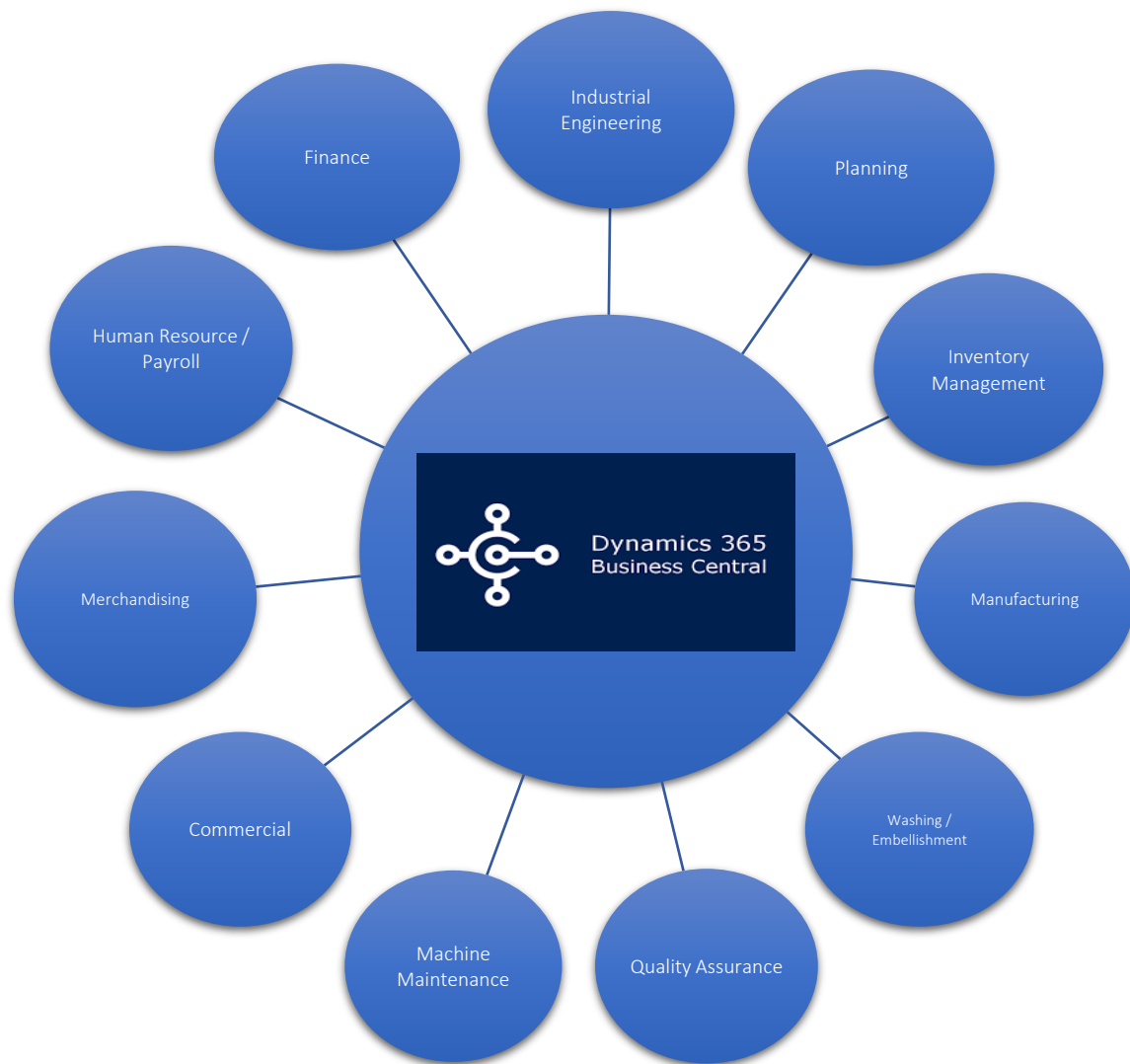
Navi Apparel Vertical



Microsoft Dynamics 365
Business Central



Navi Apparel Vertical



With the successful completion of complex projects in the field on time and many years of experience in the ERP Implementation, **Softserve** regularly conducts business research in other dimensions and competitively introduces innovative solutions to the market with great enthusiasm.

Understanding the gaps with the apparel operations and ERP system by studying the practical issues that exist in the apparel industry when dealing with the apparel industry giants, we have released to the market the best solution for the apparel industry as a complete solution under a trusted brand.

Despite the great advances in information technology in today's apparel industry, the absence of a single system in the market as a single solution is a major shortcoming. To fill that gap, the apparel industry's giants are using small information systems that specialize in operations and integrating those individual systems with the main system to carry out their tasks.

Navi Apparel Vertical Key highlights :

- ✓ Real Time Business Information
- ✓ Control materials & costs
- ✓ Reduced Production costs
- ✓ Enhanced inventory management
- ✓ End-to-end accountability
- ✓ Data Analysis

Merchandising



Highlighted Features

- Order Inquiry and Costing
- Maintaining Master file – Confirm Order Status
- Setting up Time and Action (T&A) Calendar and Plan
- Source Order Entry
- Getting pending list and overdue actions
- Preparing and Issuing cutting instructions
- Preparing Bill Of Material (BOM) sheet & Cost Calculations
- Calculate thread consumption and requirements.
- Raising Purchase Orders

Benefits

Achieving all the merchandising events to support to meet the order delivery date by achieving on time pre-production activities.

Helping the merchandising on - event planning, merchandising inputs, order status maintaining, costing and purchasing, and pending alerts.

Avoid the possibility of happening mistakes by the merchandising.

Control the cost involved activities with the merchandisers & control the over bookings of materials

The term “Merchandiser” defined as a ‘Person who do buying and selling of goods for the purpose of making a profit.’ In fashion industry there are different types of merchandising profiles which are meant to perform different types of functions all together at different stages of fashion industry. Over the years of the growth of merchandising as a discipline in the fashion

Industrial Engineering



Highlighted Features

- Developing operation master file and data base
- Operation bulleting and style analyzing
- Preparing and balancing layout – manning levels
- Printing and scanning barcodes
- Nonproductive time monitoring and analyzing
- Store operation standard video clips
- Generating Factory/Individual and section efficiency reports
- Keeping Machine operator skill history and do Grading
- Proceeding Incentive Schemes

Benefits

Make efficient the work study department activities

Proper apparel manufacturers analyzing and layout balancing for better manpower, machine and space utilization

Widen the work study involvement and performance evaluation up to deep level in very much easier way.

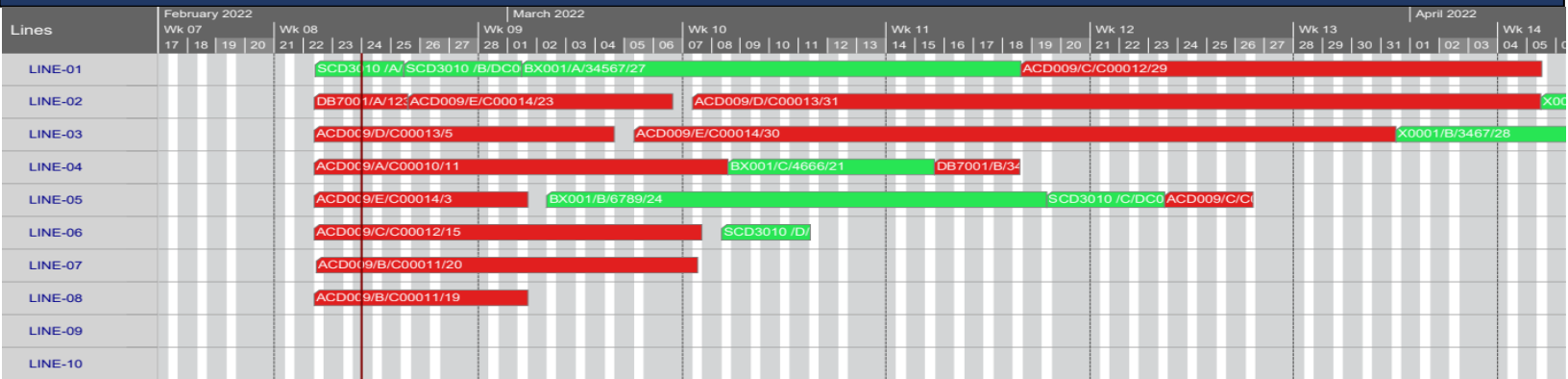
Proper training, convincing and motivating all staff by maintaining a detailed data base.

Improving productivity level of employees by tracking each individual actual efficiency levels against potentials.

Manpower, machine and attachment requirement planning.

Work study is the systematic and analytical study of work process and work method with the object of increasing efficiency, reducing cost and ensuring the best possible use of man, machine, material resources and time available. The prime aim of work study is to improve the productivity.

Production Planning



Highlighted Features

- Setting factory planning calendar
- Capacity planning and utilization updates
- Using e-Visual Scheduling board
- Production scheduling and reports with 'pieces and Standard Allocated Hours'.
- Production and shipment forecasting
- Manpower planning and allocation
- Machinery Inventory planning
- Tracking pre-production event plan
- Calculate cost per minutes

Benefits

Achieving all the planning events to support to meet the order delivery date by achieving on time pre-production, production and post-production activities.

Helping for the planers on - capacity plan, quick inquiry reply's, planning inputs, order status links, faster planning board handling and re-planning in a e-planning board, resource planning, and event pending alerts & control the over bookings of orders.

Minimize the off standard lost times in the production departments by proper planning and control support.

Avoid the possibility of happening mistakes by the planning & providing quick and efficient management information on planning and marketing.

Minimize and save the planner's valuable time and improve their efficiencies

Work Production planning is the very important department in Apparel manufacturers industry. Production planning is the controlling aspect of Apparel manufacturers industry. It is involving everything & every task in the process to execution the delivery of goods within time frame. So, they plan both option on the base of delivery date.

Inventory Management



Highlighted Features

- Maintaining goods receiving records and issuing GRN
- Maintaining goods issuing records and issuing GIN
- Maintaining goods transfers records and issuing GTN
- Controlling re-ordering levels
- Issuing gate passes
- Maintain e-Bin card
- Maintain stock balances and leftovers

Benefits

- Avoid the possibility of happening mistakes and unnecessary costs by the stores.
- Avoid the losses due to unavailability and delays of store goods.
- Avoid the goods misplacing possibilities.
- Efficient receiving and issuing operations in the store.
- Minimize and save the store keeper's valuable time and improve their efficiencies.
- Secure the left-over stock balances and minimize the wastages.
- Control the over bookings and over rating of all inventory items
- Maintaining the company Standard Operation Procedures (SOP's) related to the store's activities.
- Providing quick and efficient management information on store movements.

Inventory management, at its most basic, is the process of tracking, managing, and maintaining an optimal inventory level.

Inventory management software for the apparel industry tracks fabric, accessories related items as they move between locations.

Manufacturing



Highlighted Features

- Cutting
- Embroidery/printing
- Sewing
- Washing
- Finishing

Benefits

- Hourly Production Report –
(Line wise/Operator wise/Operation wise/Style wise)
- Order Status Report –
(Buyer wise/Style wise/Order wise/Color-Size wise)
- Cutting Production Report
- Checking Report
- Rejection Report
- Efficiency
 - Line wise
 - Daily Operator Efficiency Report
 - Operator wise Skill Matrix for
(Weekly/Monthly/Quarterly/Half yearly/yearly)
 - Operation wise Skill Matrix for
(Weekly/Monthly/Quarterly/Half yearly/Yearly)
 - Operator performance report
(Daily/Weekly/Quarterly/Half yearly)
- Off Standard Time
 - Idle Time – *(Operator wise/Line wise)*
 - Break Down – *(Line wise/Reason wise)*
 - Rework Time – *(Line wise/Style wise/Operation wise)*
 - Non-Productive Time – *(Operator wise/Line wise)*
- WIP Report
(Line wise/Operator wise/Style wise/Operation wise)
- Incentive System
 - Piece Rate Incentive
 - Individual performance-based incentive
 - Group / Batch incentive

Data Collecting Methods

- RFID
- Barcode Scanning
- Data Collecting by using Tab
- Printed Document Tracking

Apparel manufacturers production is an organized activity consisting of sequential processes such as laying, marking, cutting, Embroidery, printing stitching, checking, washing, finishing, pressing and packaging. Collection in & out any given time period.

Quality Assurance



Highlighted Features

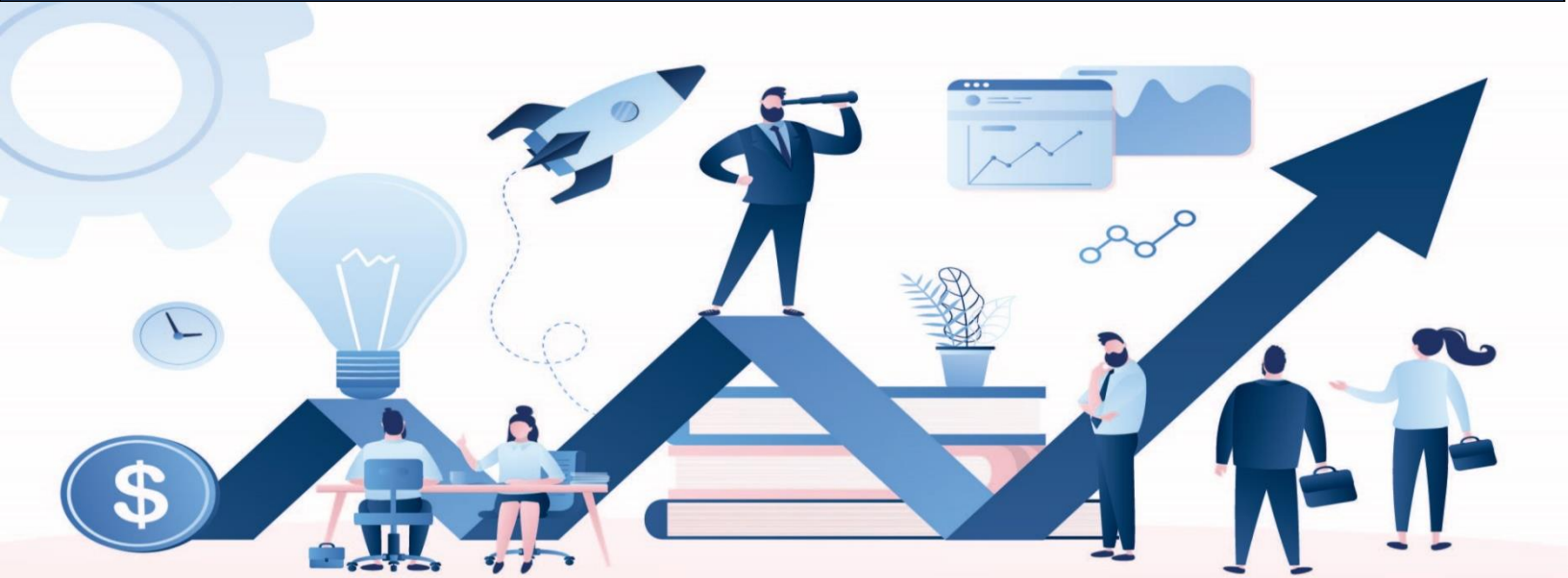
- Fabric inspection
- Trim inspection
- Cutting Quality
- Embroidery/Printing quality
- Inline & end line quality
- Finishing quality
- Washing quality

Benefits

- Audit management
- Change control,
- Compliant management
- Document control
- Supplier quality management
- Statistical process control
- Operator training management
- QMS reporting
- Design reviews
- E-mail notifications
- Traceability matrix
- Dashboard

Quality means that customer needs must be satisfied. Failure to maintain an adequate quality standard may therefore result in failure. But it also takes effort to maintain an adequate quality standard. From the first investigation to find out what the potential customer really needs for a new product through the processes of design, specification, controlled production and sales.

Commercial



Highlighted Features

- Contract & Master LC information
- BBL Opening, Goods in transit, acceptance & order shipping
- Machinery history
- Bank reference & collection
- FC /Margin /Current account balance
- Contract/Master LC utilization
- Cash In and out flow
- Contract/Master LC wise loss as profit

Benefits

- RMG (Rady Made Garment) Factory can send PI for the buyer
- RMG Factory can store Master L/C Document Data
- RMG Factory can collect Supplier PI related information
- According to supplier Proforma Invoice – PI, Back to Back L/C related information can be stored in system
- All commercial banking related data can be directly managed through Software
- Imports and Exports
- Contract/ MLC (Master Letter Credit) Amendment
- LC Management
- Shipment
- Financial Data Analysis
- Commercial Financial Reports

The Export Import of Apparel manufacturers Products is a vital matter of an Apparel manufacturers company. It increases the opportunity for entrepreneurship development in apparel manufacturers sector. Thus, it helps the unemployed people as well as the government to remove unemployment problem and also play an important role in the economic development of the country.

Machine Maintenance



Highlighted Features

- Machinery inventory
- Service managements
- Machinery history

Benefits

- Creating a schedule for maintenance activity
- Preventive maintenance entry
- Machine-wise maintenance entry
- Spare parts procurement from store through store indent
- Entering the details of spare parts changed, repaired, and replaced Entering the cost for maintenance in the maintenance cost activity page
- Machinery annual maintenance contract (AMC)/calibration entry and authorization entry
- Machinery maintenance-pending entry
- Reactive maintenance entry, where activity description, date, machine number, and all other allied details are entered and saved for further data analysis

Maintenance is the routine job for keeping sewing machine fit for Apparel manufacturers manufacturing. Every factory assigns maintenance team to ensure the proper functioning of a sewing machine. Sewing Machine maintenance team make Schedule and take preventive action. Proper maintenance of the sewing machine will ensure long-lasting service. For this reason, the sewing

Finance



Highlighted Features

Financial Management

- | | | |
|------------------------|----------------------------|---------------------------------------|
| ✓ Basic General Ledger | ✓ Basic Fixed Assets | ✓ Electronic Payment / Direct Debits* |
| ✓ Allocations | ✓ Insurance | ✓ Bank Account Reconciliation |
| ✓ Budgets | ✓ Maintenance | ✓ Payment Handling |
| ✓ Account Schedules | ✓ Fixed Assets Allocations | ✓ Cash Flow Forecast |
| ✓ Consolidation | ✓ Reclassifications | ✓ Advanced Dimensions |
| ✓ Basic XBRL | ✓ Bank Account Management | ✓ Deferrals |
| ✓ Change Log | ✓ Check Writing | ✓ Multiple Currencies |

Advanced Financial Management

- | | | |
|--------------------------|--------------------------|-------------------|
| ✓ Responsibility Centers | ✓ Inter-company Postings | ✓ Cost Accounting |
|--------------------------|--------------------------|-------------------|

Payroll



Highlighted Features

Employee Information

- Personal Information with photograph
- Employment Details (Designation, Employee status, Date Joined etc....)
- Payment Details (Basic Salary, Fixed Allowance, Fixed Deductions etc...)
- Employee segregation by department, job category, class and status

Recurring Activity Maintenance

- Monthly, daily salary facility
- Salary advance facility
- Over Time claims
- No Pay deductions
- Daily Attendance Entry
- Maintenance of fixed allowance and variable allowance
- No Pay deductions Employee segregation by department, job category, class and status

Features

- Direct link to MS Dynamics NAV Finance module
- Multi company maintenance
- Customized Pay Slip with company logo
- Advance Employee search
- Pay method settings (Cash, Cheque and Bank Transfer)
- Permanent salary posting to close the month and generate the final reports
- Ability to hide company allowances, deductions and over time columns to generate dummy report
- Generate text file for online bank transfer for multiple bank accounts

Staff Loans

- Unlimited no of Loans creations (e.g.: Festival Loan, Vehicle Loan, Housing Loan etc.)
- Auto loan deductions by no of installments
- Loan writes off facility
- Loan maintenance by department, job category and loan types

Auto Calculation

- Employee Provident Fund (EPF) - (8% and 12% or custom defined)
- Employee Trust Fund (ETF) - (3% or custom defined) PAYE Tax calculation
- Over Time calculation by 1.0, 1.5, 2.0 or custom defined

Reports

- | | |
|--|--|
| ▪ Employee Information | ▪ Staff loan Summary & Details |
| ▪ Salary Sheet | ▪ No Deductions |
| ▪ Payroll summary & Payroll Summary comparison | ▪ EPF, ETF and other statutory reports |
| ▪ Over Time claims | ▪ Pay Slips |
| ▪ Allowance (Fixed & Variable) | ▪ Signature Sheet |

Microsoft Dynamics 365 Business Central & Payroll manage everything having to do with the process of paying employees and filing employment taxes. They are put in place to keep track of worked hours, calculating wages, withholding taxes and other deductions, printing and delivering checks and paying government employment taxes. Machine maintenance in Apparel manufacturers.



About Softserve, who we are...

We, Softserve (Private) Limited, are an authorized Microsoft Certified partner in Sri Lanka, introducing Microsoft technologies to the local clientele. Softserve also focus on providing consulting services and total solution for diversified business enterprises in Sri Lanka and in Asia. Our core products include Microsoft Dynamics 365 Global ERP, Power BI business intelligent tool, Azure Cloud and Microsoft infrastructure solutions.

Along with the Microsoft Gold partnership, we further strengthened our base and widened our arms to provide total IT infrastructure solutions, collaborating with leading foreign and local IT service providers of popular brands. In this direction, Softserve is an authorized indirect Cloud Service Provider (CSP) of Crayon Global Network.

Furthermore, while we aligned to the same line of ERP, we also focus on diversified markets. We sell and implement two industry specific ERP applications in Hospitality & Property management and Fashion Design & Apparel manufacturers, in Sri Lanka.

Softserve is specialize in analyze an enterprise's IT infrastructure & pain areas and come up with best possible solutions in terms of quality and budget. The company IT infrastructure should be scalable, reliable and secured. In the contest of today's competitive business and global accessibility, the IT Infrastructure provides the backbone of operations and we always believe IT should grow in the direction business and the vision of the company.

Softserve (Private) Limited

187-A, 1/1, Rajagiriya Road,
Rajagiriya,
Sri Lanka.

Telephone: +94 113 560470

www.softservesolution.com